

KSI NEWS

— WELCOME —
BACK TO SCHOOL



A big welcome back to you all after what we hope has been a restful half term!

Anti Bullying Week

11th November - 15th November



This year's Anti Bullying theme is 'Choose Respect'

This year, children will be learning about how children and young people can avoid resorting to bullying, even when we disagree and remind adults to lead by example, online and offline.

Odd Sock Day - Monday 11th November

Odd Socks Day is a chance for us to celebrate Anti-Bullying Week in a positive way by asking pupils and staff to wear odd socks to school on Monday to celebrate what makes us all unique

Key articles for us this month are:

Article 12: You have the right to an opinion.

Article 19: You have the right to be protected from being hurt or mistreated.



Online Safety



We know that many of our children have fantastic fun, and even continue their learning, at home online.

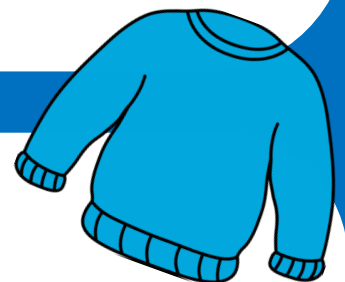
Whether it's on a tablet, phone or laptop it's so important that we teach our children about staying safe online. There are loads of tips and resources at our website.

Simply go to

<https://www.southstanleyinfants.co.uk/online-support>



Reminders



Reading books will be sent out on a Tuesday and Thursday. Please can you sign everyday to say your child has read and return it on a Monday and a Thursday. Homework will be sent out every Thursday and returned on the following Monday.

Reach More Parents App - Don't forget to sign up as the latest information will be sent out via the app.

If you have any questions or would like to speak to your child's class teacher, they are available before 8:40am or after 3.30pm. Alternatively, you can contact school to arrange an appropriate time for them to contact you at home.

ALL ABOUT OUR SCHOOL ENVIRONMENT

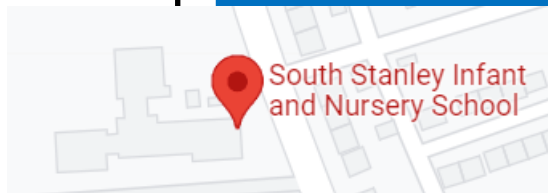


Our topic this term is 'All about our school environment' and the children will be identifying human and physical features on a map of the school.

Here is an overview of some of the things that you can do with your child to support them with their learning throughout this half term.

Key Vocabulary

map, human features, physical features, soil, forest, wood, hill, vegetation, key



How old is our school?

Make a list of the human features you find on your way to school.

Write a list of the physical features you find on your way to school.

Ask your grown ups to help you research any fun facts about our local area using the internet.

Can you draw a map of your route to school and identify human and physical features on it?

Write down what you find out and bring it into school to collect your topic certificate!



17. Access to information from the media

Above is some of the key vocabulary we will be learning and using for our topics this term. Please discuss them with your child and enjoy researching anything you are unsure about!



5. Family guidance as children develop

Trips & Visits/ Curriculum Enrichment

Y1 will be looking at both physical and human features of our school environment this term therefore we will be taking walks around our school and our local area.

